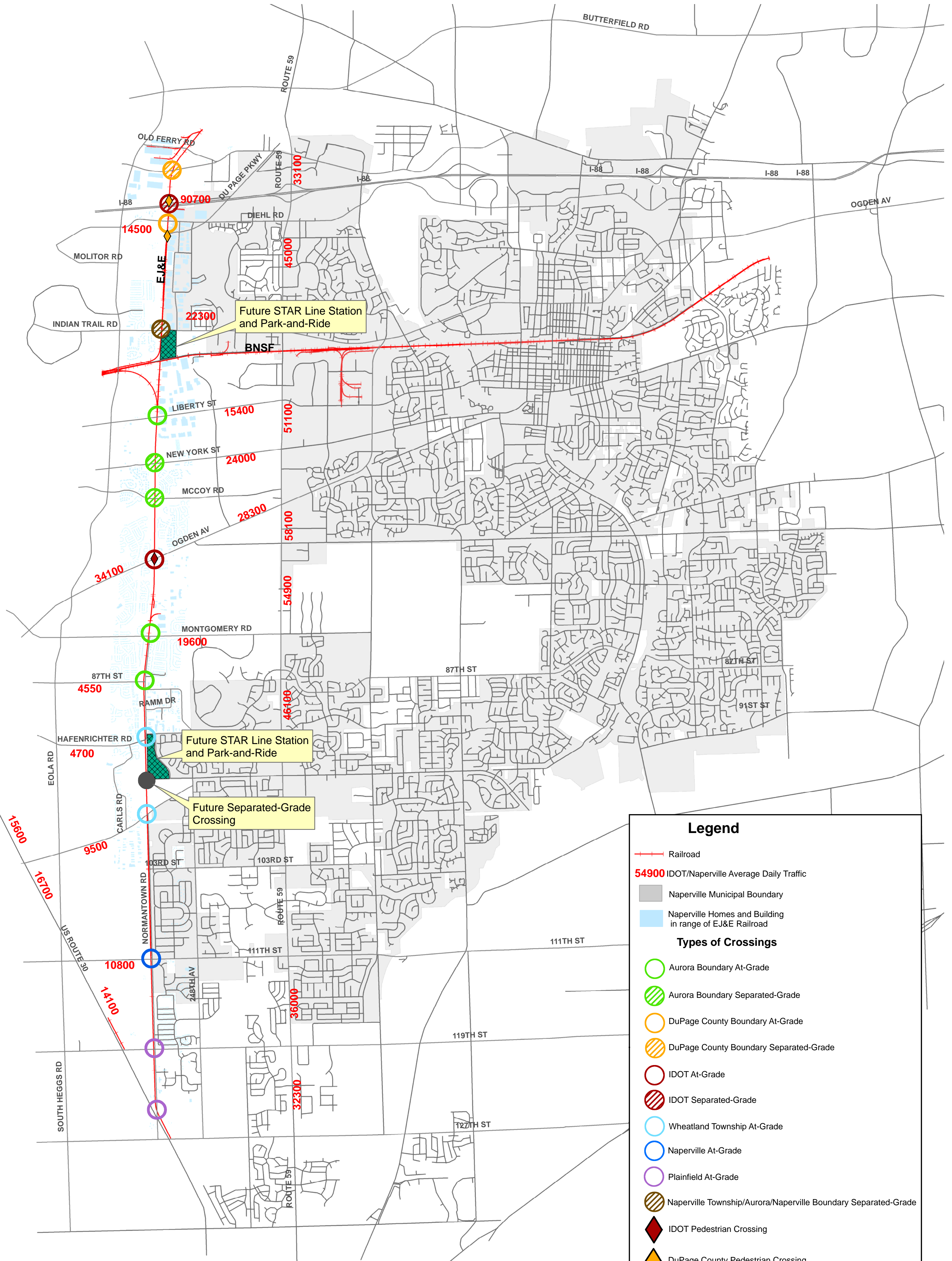
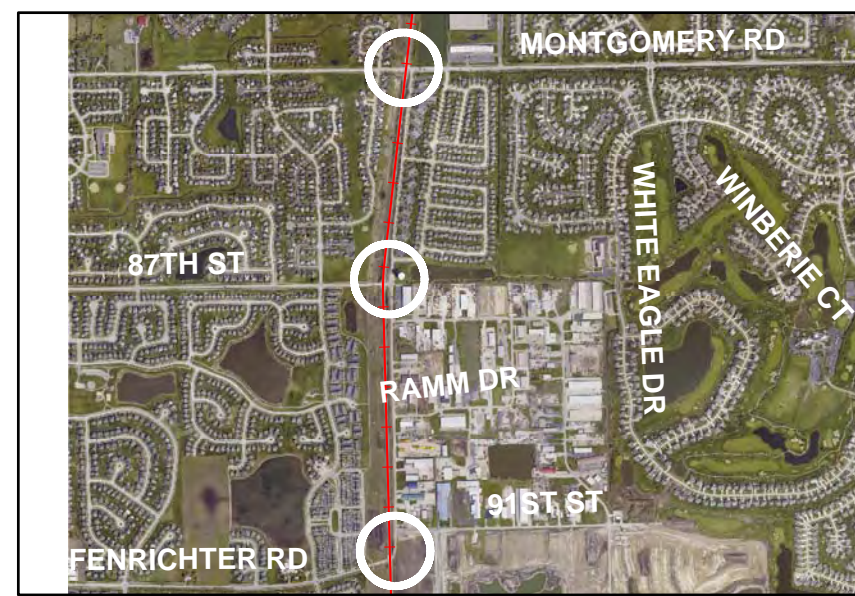
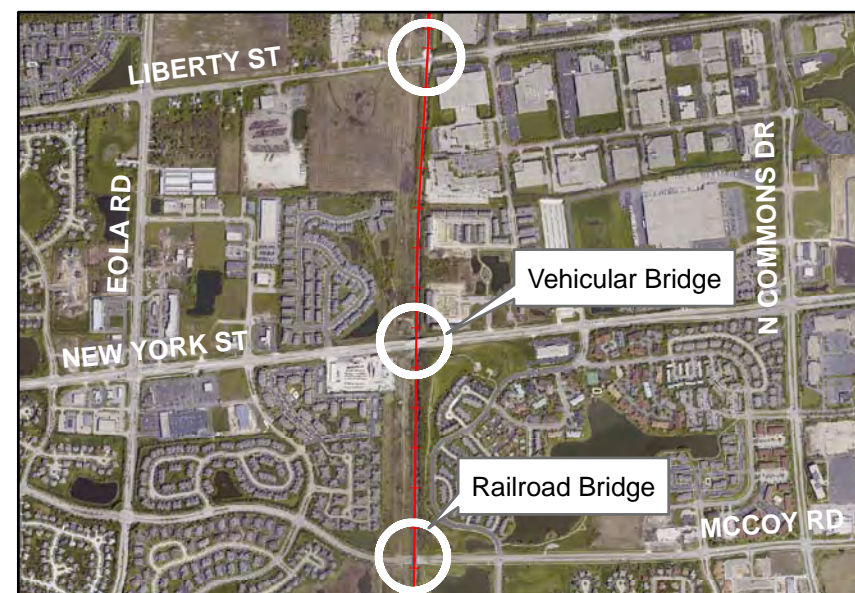
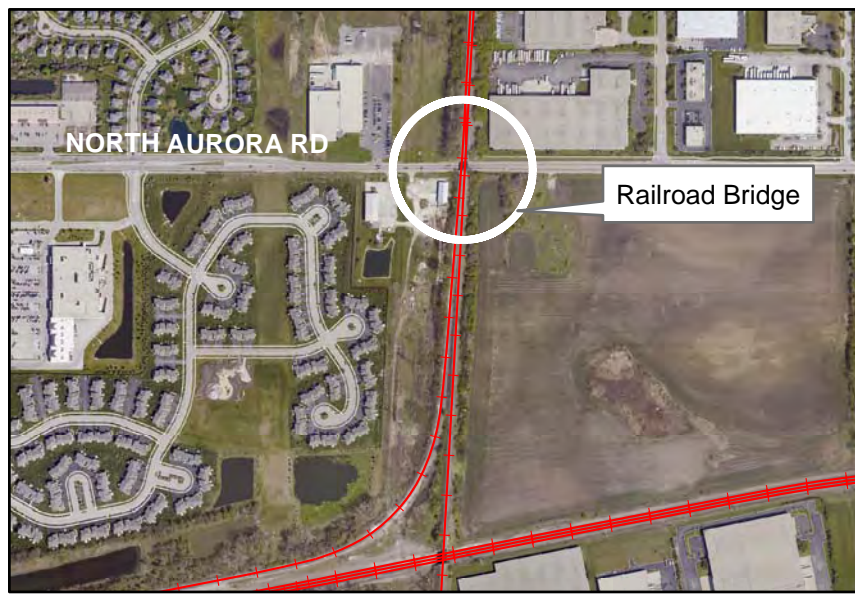
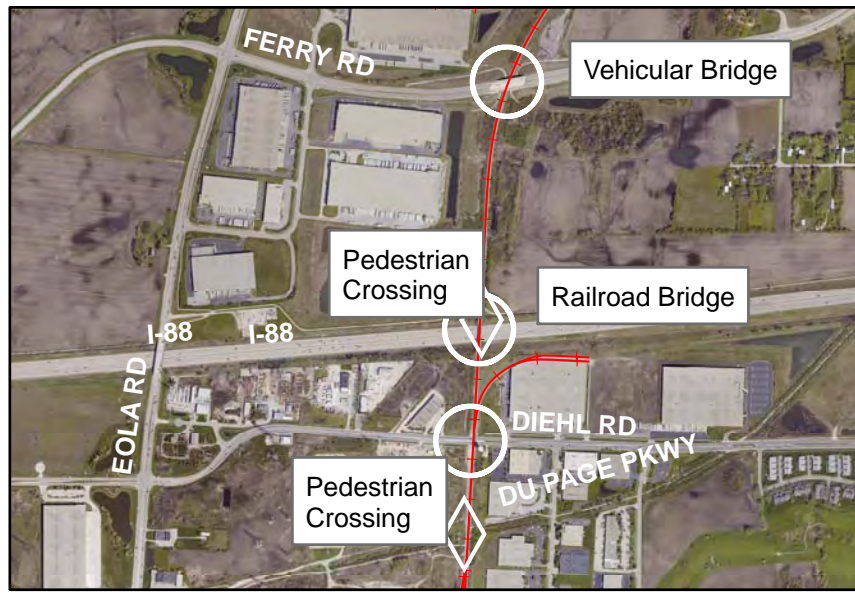


EJ&E Railroad



Legend

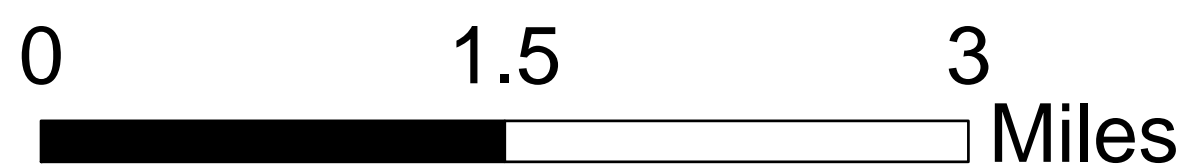
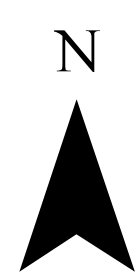
- Railroad
- 54900 IDOT/Naperville Average Daily Traffic
- Naperville Municipal Boundary
- Naperville Homes and Building in range of EJ&E Railroad

Types of Crossings

- Aurora Boundary At-Grade
- Aurora Boundary Separated-Grade
- DuPage County Boundary At-Grade
- DuPage County Boundary Separated-Grade
- IDOT At-Grade
- IDOT Separated-Grade
- Wheatland Township At-Grade
- Naperville At-Grade
- Plainfield At-Grade
- Naperville Township/Aurora/Naperville Boundary Separated-Grade
- IDOT Pedestrian Crossing
- DuPage County Pedestrian Crossing



Transportation, Engineering and Development Business Group
www.naperville.il.us
January 2008



This map should be used for reference only. The data is subject to change without notice. City of Naperville assumes no liability in the use or application of the data. Reproduction or redistribution is forbidden without expressed written consent from the City of Naperville.