

| MANHOLE DIAMETER | |
|------------------------|--------|
| OUTLET SEWER DIA. | D |
| 21" AND UNDER | 4'-0" |
| 24" THRU 42" INCLUSIVE | 5'-0" |
| 48" | 6'-0" |
| 60" | 9'-0" |
| 60" | 10'-0" |
| | 9 1/2" |

8" SOLID CONC. BLOCK SUPPORTS (3) EQUALLY SPACED AT 120°. TOPS MUST BE LEVEL (NOT REQD. WITH ALT. PRECAST BOTTOM

CEMENT PIPE IN PLACE WATERTIGHT SHAPE POURED CONCRETE BOTTOM TO INVERTS OF PIPES AS SHOWN

⊛ ALL M.H. COMPONENTS SET IN BUTYL ROPE BEDS. CLOSE LIFT LUG HOLES WATERTIGHT.

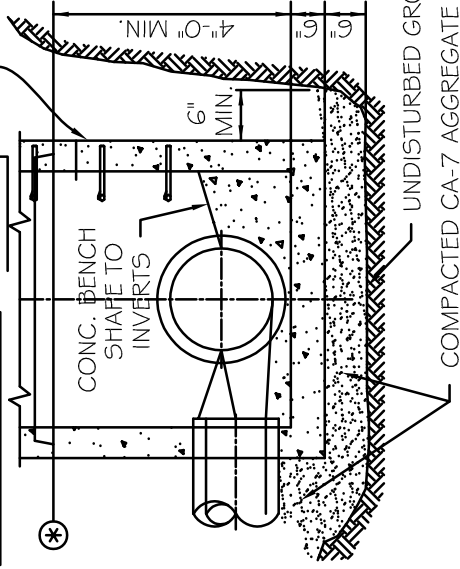
EXPANDED POLYPROPYLENE ADJUSTING RINGS WITH BUTYL ROPE. BUTYL ROPE SHALL BE 3" THICKNESS BY 3.5" WIDE OR APPROVED EQUAL.

PRECAST REINF. CONC. MANHOLE CONE SECTION (ECCENTRIC)

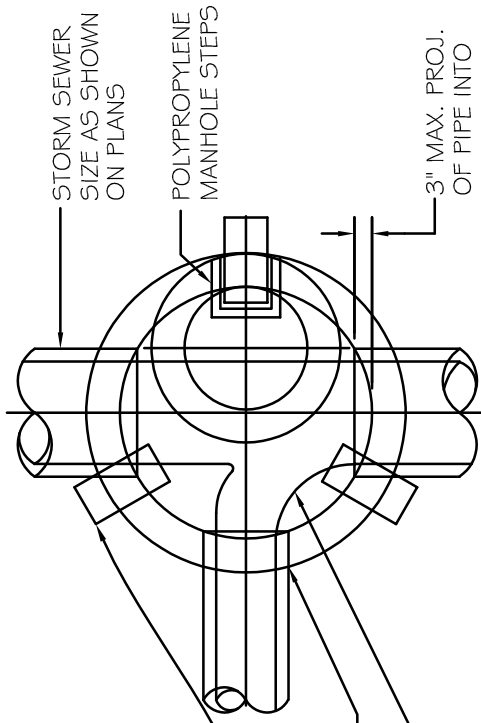
PRECAST REINF. CONC. MANHOLE SECTION PER STANDARD SPECIFICATION FOR IMPROVEMENTS.

POURED CLASS-X CONC. MANHOLE BOTTOM WITH SHAPED INVERTS TO SEWER PIPES-POURED TO UNDISTURBED GROUND-COVER CONCRETE SUPPORT BLOCKS (ALTERNATE-SEE DETAIL BELOW)

PRECAST REINFORCED CONCRETE BOTTOM SLAB OR BOTTOM PER STANDARD SPECIFICATION FOR IMPROVEMENTS.



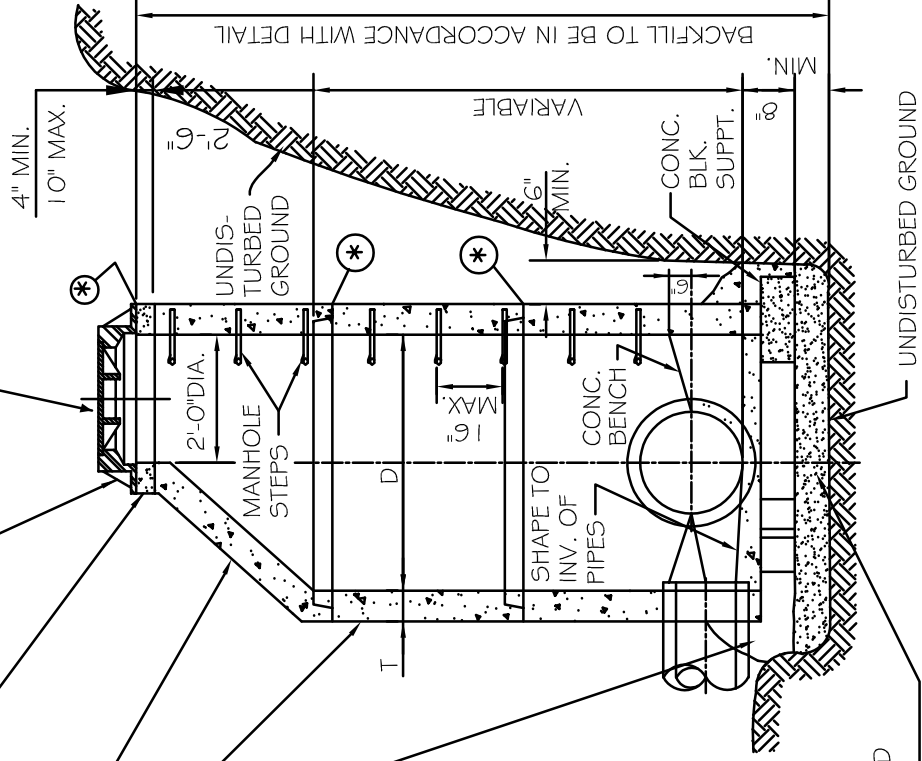
ALTERNATE BOTTOM



PLAN

Lid with "city of aurora"

SET SPECIFIED FRAME IN BUTYL ROPE



SECTIONAL ELEVATION



REVISIONS

| DATE | BY | |
|---------|-----|--|
| 01/2011 | jhs | |
| 01/2014 | dlg | |
| 06/2022 | cja | |

STORM MANHOLE, TYPE A
DETAIL

DRAWING NUMBER

CHECKED: DF

DRAWN: NM

SCALE: NOT TO SCALE

DATE: 1/04

EXHIBIT III-A-3