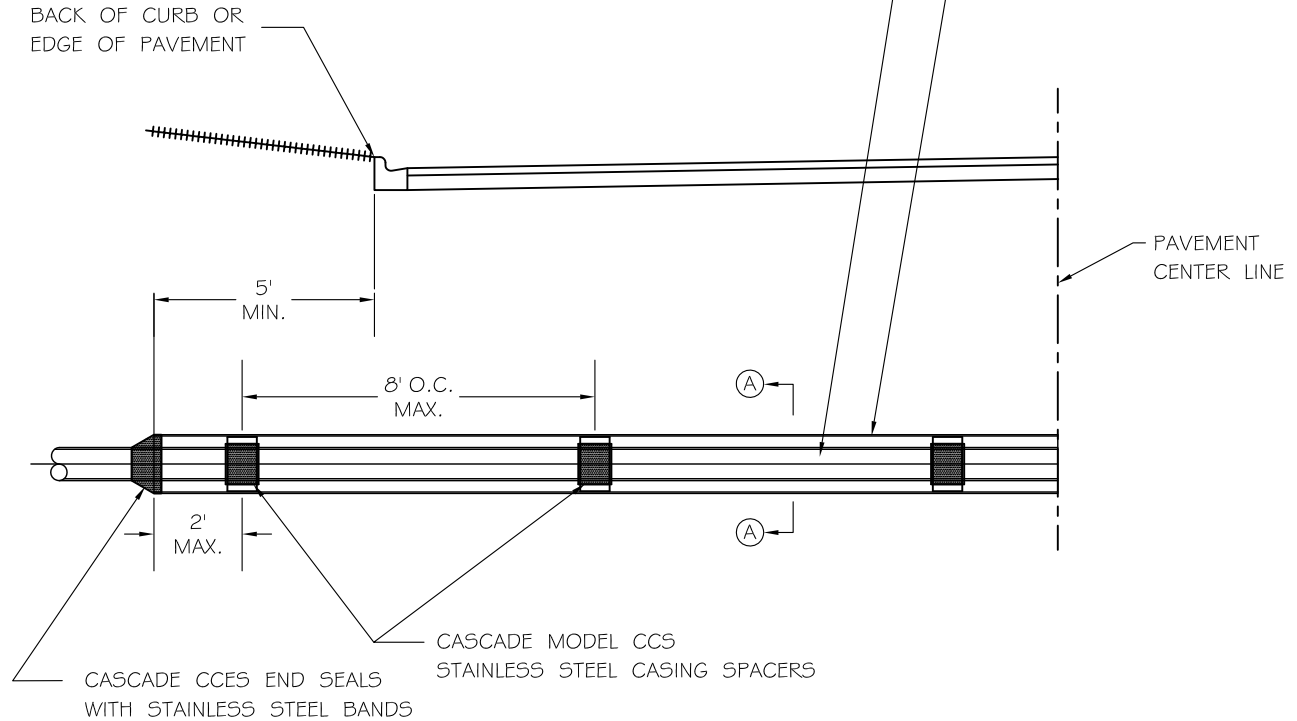
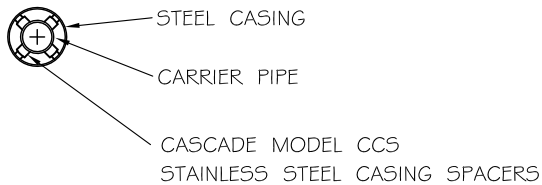


STEEL CASING, 3500 P.S.I. YEILD STRENGTH,
 MINIMUM 3/8" BITUMINOUS COATED, MINIMUM
 8" LARGER DIAMETER THAN CARRIER PIPE
 AUGERED AND JACKED UNDER ROADWAY

CARRIER PIPE (2" DIAMETER AND LARGER):
 SANITARY = PVC PIPE
 WATER OR STORM = D.I.P. PIPE,
 WITH FIELD LOCK GASKETS.



SECTION (A)-(A)



REVISIONS

DATE:	BY:

CASING PIPE

SCALE: NOT TO SCALE	CHECKED: DF	DRAWING NUMBER
DATE: 10 / 2007	DRAWN: jhs	EXHIBIT III-C-13